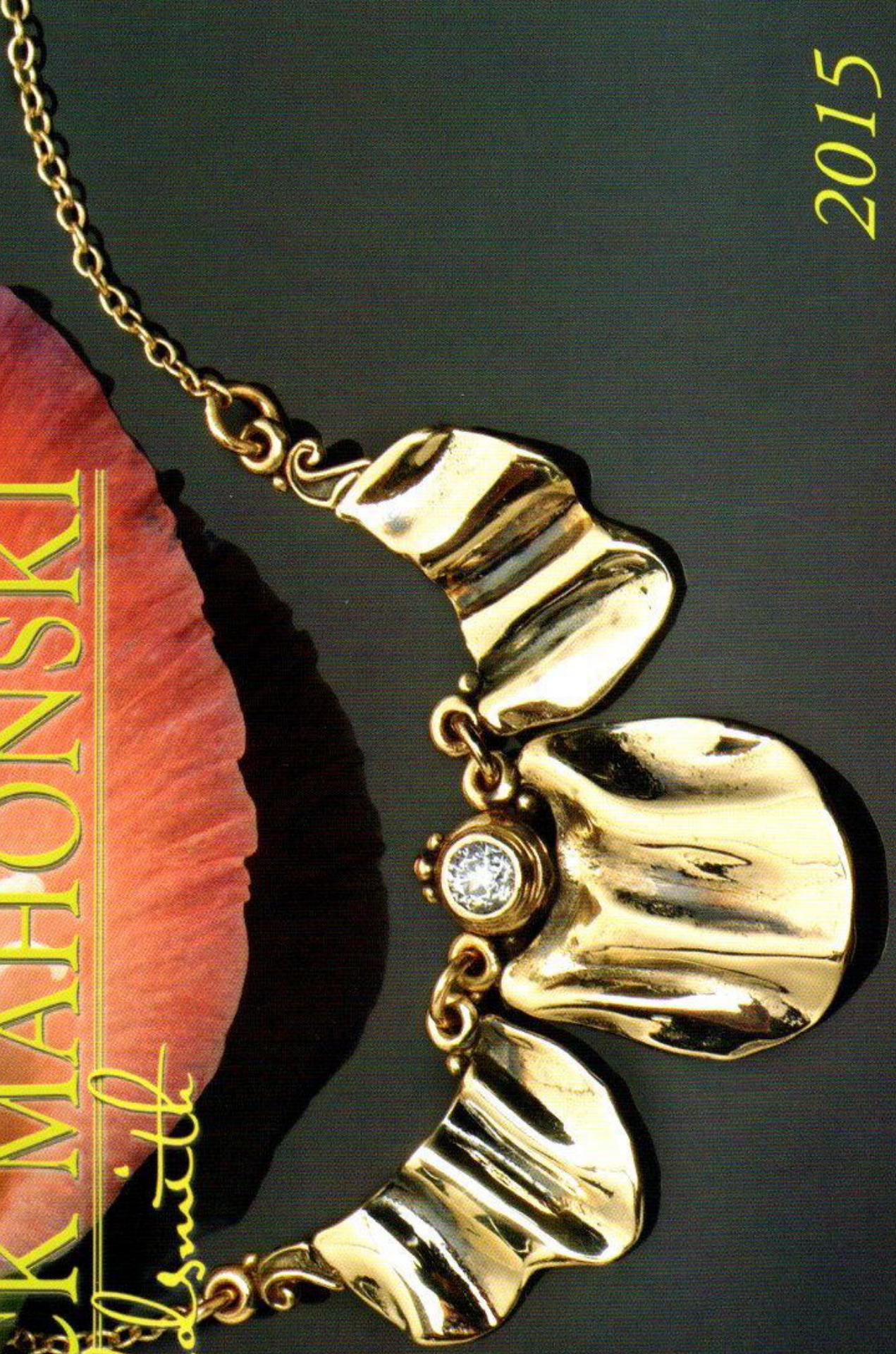


RICK MAHONSKI

Goldsmith

2015





Unique and Distinctive Design

Something in the nature of gold is exclusively unique. Like nothing else seen by man under the sky. Its qualities are both practical and stirringly magical. It has always been since man first laid his eyes on this golden metal. Throughout the ages in the most primitive and in the most sophisticated cultures man has pursued gold. It has become the metal of choice for adorning the body.

At Rick Mahonski Goldsmith we are as serious today in continuing the centuries old tradition as our ancestors. Many of the techniques and processes have remained the same for thousands of years. In using these "old techniques" we are striving to create beautiful pieces of art for body adornment. You can be assured of the best craftsmanship in each piece we create. The metals are the purist and the gemstones are the finest. The elegance of each design will make a statement about you without saying a word.

The greatest compliment I can receive is to see someone wearing my jewelry. I truly appreciate your business and will work diligently to satisfy each customer.

Sincerely,
Rick Mahonski



Commitment to Details

- | | | | |
|------|--|------|---|
| 2424 | Scroll and lantern ring with 5 pt. diamond | 2452 | Arrow ring with 6x6 triangle sapphire and 5 pt. diamond |
| 2425 | Liso River engagement ring with 1ct. cushion cut diamond | 2453 | Grape leaf under the arch with 5 pt. diamond |
| 2426 | Sevan River engagement ring with 1/2 ct. diamond | 2454 | Middle ages pendant with 7mm sapphire and four 5 pt. diamonds |
| 2427 | Spiral ring with 5 pt. diamond | 2455 | Botticelli pendant 16x9 African opal and 10 pt. diamond |
| 2428 | Pea pod earrings | 2456 | Wrought iron cross with 15 pt. princess cut diamond |
| 2429 | Sideway cross with 10 pt. diamond | 2457 | Wings earrings |
| 2430 | Sideway cross | 2458 | Adoration pendant with 7mm pearl |
| 2431 | Sideway wave cross | 2459 | Dome earrings with 5 pt. diamond |
| 2432 | Flying column earrings | 2460 | Fiddle head fern tail pendant 10mm triangle moonstone and 5 pt. diamond |
| 2433 | Grape leaf pendant with 5 pt. diamond | 2461 | Vatican cross with three 6x4 oval garnet cabs |
| 2434 | Dead Mans Curve pendant with 20 pt. diamond | 2462 | Giovanni earrings with 5 pt. diamonds |
| 2435 | Chapel pendant with 7mm cushion cut blue topaz and 5 pt. diamond | 2463 | Radiant pendant with 45 pt. t.c.w. diamonds |
| 2436 | Classical dome earrings | 2464 | Radiant earrings |
| 2437 | Kite tail pendant with 5 pt. diamond | 2465 | Mountain pendant with 10mm moonstone and two 5 pt. diamonds |
| 2438 | Queens pendant with 10mm cushion cut amethyst and 10 pt. diamond | 2466 | Classical drop earrings |
| 2439 | Scroll pendant with 5 pt. diamond | 2467 | Appomattox River engagement ring with 1/2 ct. diamond |
| 2440 | Classical cross with 5 pt. diamond | 2468 | Newberry ring with 1 1/2 ct. t.c.w. diamonds |
| 2441 | Vine pendant with 5x7 oval Ceylon moonstone and 5 pt. diamond | 2469 | Little Duck River engagement with 2 .20 t.c.w. diamonds |
| 2442 | Oak leaf pendant 11x14 oval peridot and 15 pt. diamond | 2470 | Mountain Fork River engagement ring with 1/2 ct. diamond |
| 2443 | Angel pendant with 7mm Iolite | 2471 | Brandywine Creek engagement ring with 1 ct. cushion cut diamond |
| 2444 | Classical column earrings | 2473 | Sunrise pendant with 5x7 oval sapphire and 3 pt. diamond |
| 2445 | Fleur-di-lis earrings with 5 pt. diamond | 2473 | Scroll drop earrings with 5 pt. diamonds |
| 2446 | Moonlight pendant 10mm and 10 pt. diamond | 2474 | Statement pendant with 10mm triangle African opal and 15 pt. diamond |
| 2447 | Fleur-di-lis tail earring with 5 pt. diamonds | 2475 | Leaf and vine pendant with 10 pt. diamond |
| 2448 | Masters pendant with 9x7 oval amethyst cab and 5 pt. diamond | 2476 | Claw foot cross with 5 pt. diamond |
| 2449 | Sun tail pendant with 30 pt. t.c.w. diamonds | | |
| 2450 | Swirl ring with 5x7 oval sapphire | | |
| 2451 | Queens ring with 5x7 Tsavorite and four 5 pt. diamonds | | |



2433

2432

2434

2435

Fine Craftsmanship



2437

2436

2438

2439

2440



Creation with Imagination





2450



2451



2452



2453

Fine Art for the Body



2454



2455



2456



2457



Statement without Words





2467



2468



2469



2470



2471

Radiant Gemstones



2472



2473



2474



2475



Art from Gold and Gems





Passion in each Piece





2496

2497

2498

2500

2499

As Unique as Her



2501

2502

2503

2504



Fine Diamonds and Gems





2515

2516

2518

2517

Enduring Beauty



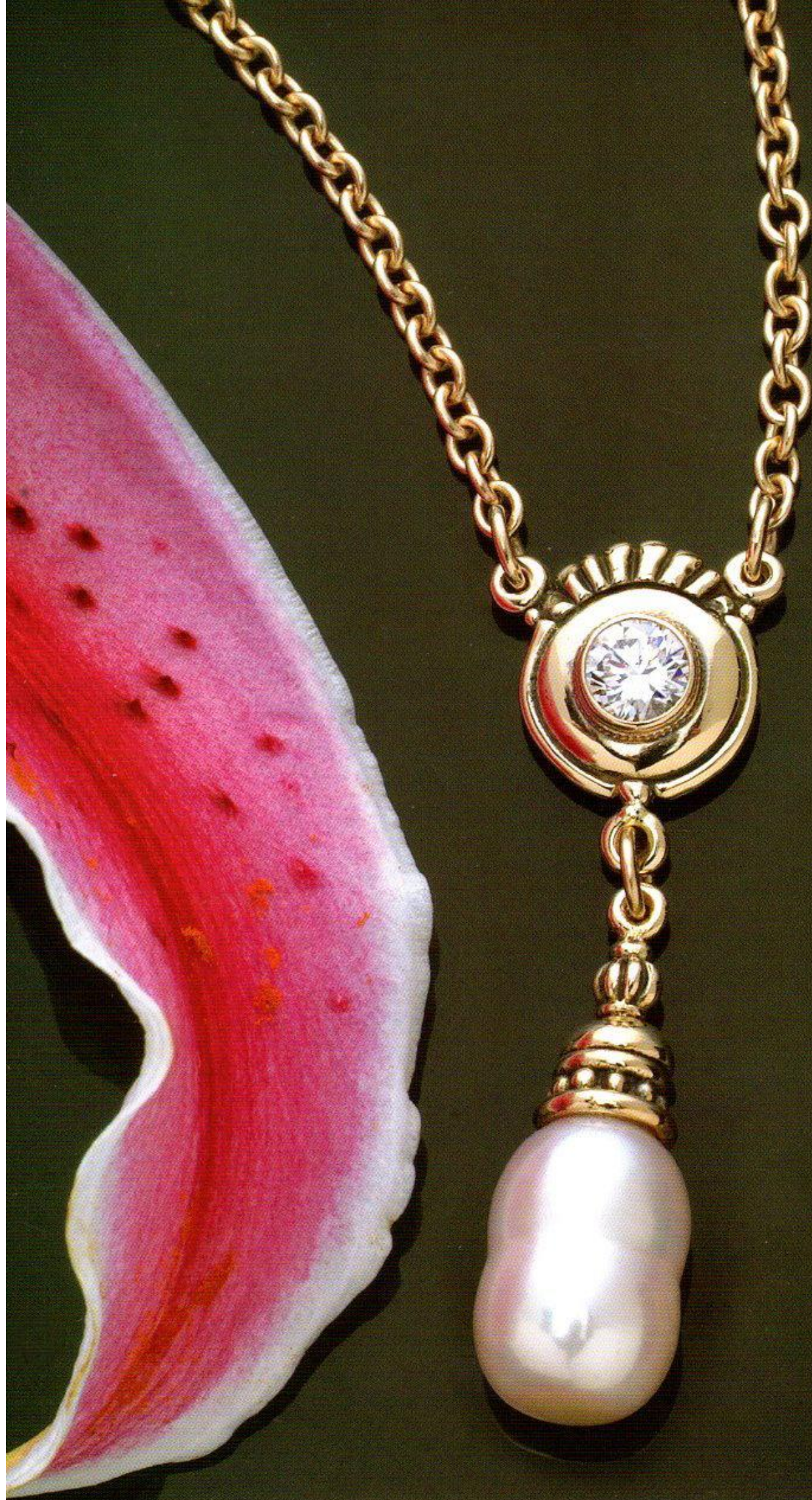
2519

2520

2521

2522

2523





Some Things are Meant to Be

- | | | | |
|------|--|------|--|
| 2477 | Scroll on a circle earrings | 2505 | Wings pendant with 9x7 oval amethyst cab |
| 2478 | Wave pendant with 1 ct. t.c.w. diamonds | 2506 | Angel wings pendant with 5x7 oval sapphire and two 10 pt. diamonds |
| 2479 | Tear drop pendant with 10x8 pear shape African opal | 2507 | Sun ray pendant with 1/4 ct. diamond |
| 2480 | Scroll earrings | 2508 | Fleur-di-lis hoop earring with 5 pt. diamonds |
| 2481 | Cross ring with 5 pt. diamond | 2509 | Fan drop earrings with 5 pt. diamonds |
| 2482 | Artistic ring with 9x7 oval green tourmaline cab | 2510 | Wine cellar pendant with 10 pt. diamond |
| 2483 | Spiral ring with 5x7 oval pink sapphire | 2511 | Napa Valley pendant with 6x8 oval amethyst |
| 2484 | Passion ring with 5mm sapphire and 10 pt. t.c.w. diamonds | 2512 | Grape leaf door knocker earrings |
| 2485 | United ring with 5x7 oval tsavorite and two 5 pt. diamonds | 2513 | Grape and vine pendant with 5 pt. diamond |
| 2486 | Fan design ring with 5 pt. diamond | 2514 | Grape leaf ring with 1/4 ct. diamond |
| 2487 | Genesee River engagement ring with 1/2 ct. diamond | 2515 | Fragment pendant with 7mm triangular pink tourmaline and 5 pt. diamond |
| 2488 | Pine Creek engagement ring with 1/2 ct. diamond | 2516 | Shield series earrings |
| 2489 | Solid Oak leaf ring with 70 pt. t.c.w. diamonds | 2517 | Emperor pendant with 10x12 African opal and 15 pt. diamond |
| 2490 | Kansas River engagement ring with 1/2 ct. diamond | 2518 | Cross with 5 pt. diamond |
| 2491 | Uruguay River engagement ring with 1/2 ct. diamond | 2519 | Corinthian pendant with 5x7 oval sapphire and 10 pt. diamond |
| 2492 | Flow series pendant with 15 pt. diamond | 2520 | Flowing leaf pendant with 1/4 ct. diamond |
| 2493 | Fan drop earrings with 5 pt. diamonds | 2521 | Flower pendant with 5 pt. diamond |
| 2494 | Reminiscence from the past pendant with 20 pt. diamond | 2522 | Flower earrings with 5 pt. diamonds |
| 2495 | Classical horse shoe pendant with 6x8 oval sapphire | 2523 | Rock-a-bye earrings |
| 2496 | Cone cross with 15 pt. diamond | 2524 | Roman column pendant with 15 pt. diamond |
| 2497 | Folly pendant with 1/4 ct. diamond | 2525 | Sunrise pendant with 6x8 oval sapphire |
| 2498 | Grape and vine pendant with 3mm ruby | 2526 | Scroll pendant with 5x7 oval white sapphire |
| 2499 | Grape leaf bracelet with four 5 pt. diamonds | 2527 | Claw ring with 4mm garnet and two 5 pt. diamonds |
| 2500 | Leaf and vine pendant with 9x7 oval pendant and 10 pt. diamond | 2528 | Scroll ring with 5x7 sapphire and two 5 pt. diamonds |
| 2501 | Wrought iron shield earrings | 2529 | Leaf ring with 6mm tsavorite and two 5 pt. diamonds |
| 2502 | Leaf pendant with 5mm chrome diopside | 2530 | Lace ring with 7mm garnet cab |
| 2503 | Three diamond classic pendant with 80 pt. t.c.w. diamond | | |
| 2504 | Scroll necklace with 5x7 oval sapphire and 10 pt. diamond | | |

Pre-Sort STD
US Postage
PAID
Williamsport, PA
Permit #201



2527



2528



2529



2530

Visit us on the Web at
www.rickmahonski.com
Like us on Facebook.

Rick Mahonski Goldsmith
829 West Southern Avenue
South Williamsport, PA 17702
1-800-599-5833 or 570-322-2516
Fax: 570-327-5511