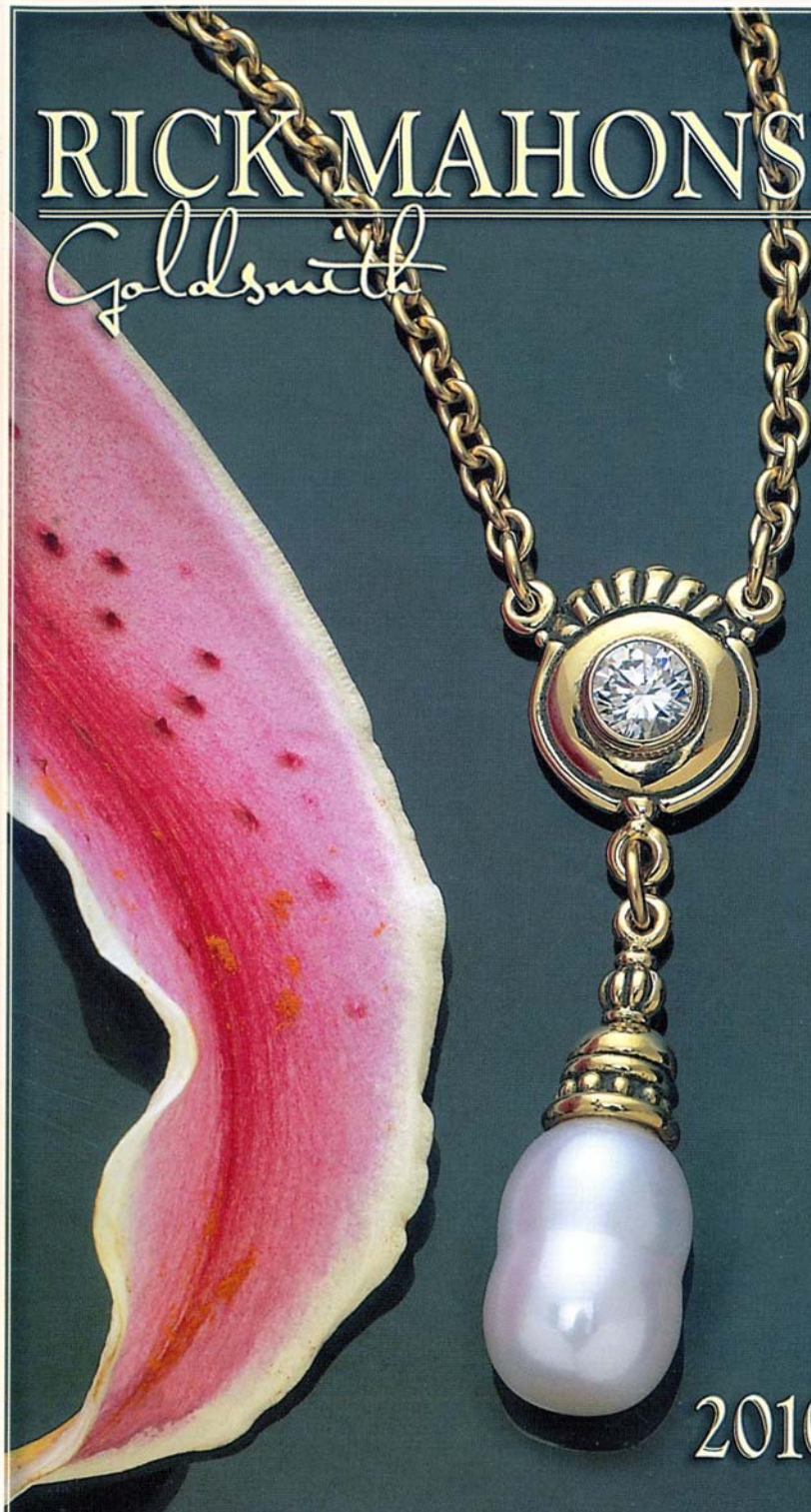


RICK MAHONSKI

Goldsmith



2010



- | | | | |
|------|--|------|---|
| 2058 | Column pendant with 18 pt. diamond | 2084 | Bathtub Claw ring with 3/4 ct. oval diamond and two 5 pt. side diamonds |
| 2059 | Sun pendant with 6x8 oval ceylon sapphire | 2085 | Triumph pendant with 9x7 oval lotus blossom sapphire, bars and 18" chain |
| 2060 | Capital pendant with 5x7 oval white sapphire | 2086 | Fan earrings |
| 2061 | Diamond drop earrings with two 5 pt. diamonds | 2087 | Diamond on Fan earrings with 5 pt. diamonds |
| 2062 | Shield pendant with 38 pt. diamond, bars and 18" chain | 2088 | Volute pendant with 5x7 oval pink sapphire |
| 2063 | Sunray pendant with 20 pt. diamond | 2089 | Artist ring with 5x7 oval sapphire and two 18 pt. princess cut diamonds |
| 2064 | Classical Sun pendant with 4mm tsavorite 18" chain | 2090 | Empire ring with 7 pt. diamond |
| 2065 | Pearl drop earrings with 7mm pearls | 2091 | Suspended ring with 5x7 oval pink sapphire |
| 2066 | Mainland pendant with 1 ct. blue sapphire | 2092 | Abbey ring with 1-1/2 ct. cushion cut tsavorite and two 5 pt. diamonds |
| 2067 | Sculptor pendant with 5x7 oval black opal and two 5 pt. diamonds, bars and 18" chain | 2093 | Pea Pod ring |
| 2068 | Iron Age earrings | 2094 | Admiration bracelet |
| 2069 | Churchyard earrings with 5 pt. diamonds | 2095 | Japanese Lantern ring with 1-1/2 ct. cushion cut tsavorite |
| 2070 | Ornament ring with 5x7 ceylon sapphire and two 5 pt. diamonds | 2096 | Arm Chair ring with 6x8 oval sapphire |
| 2071 | Vineyard ring with 4mm tsavorite | 2097 | Cross ring with four 3 pt. diamonds |
| 2072 | Dove ring with 5mm pink tourmaline | 2098 | Flower earrings with 4 pt. diamonds |
| 2073 | Ceremony ring with 5x7 oval sapphire and 5 pt. diamond | 2099 | Crowned Heart pendant with 7x7 fine sapphire, bars and 18" chain |
| 2074 | Finger Lakes ring with 22 pt. diamond | 2100 | Elizabethan ring with 1 ct. diamond and two 5 pt. side diamonds |
| 2075 | Napa bracelet with five 3 pt. diamonds | 2101 | Entrance pendant with 5x7 oval lotus blossom sapphire, bars and 18" chain |
| 2076 | Grape leaf earrings | 2102 | Nite earrings |
| 2077 | Princess ring with 80 pt. cushion cut diamond | 2103 | Queens ring with 1-1/2 ct. diamonds total weight |
| 2078 | Leaf ring with 1/2 ct. diamond | 2104 | Side Valute ring with 1/2 ct. diamond |
| 2079 | Museum ring with 3/4 ct. diamond and two 5 pt. side diamonds | 2105 | Elizabethan style ring with 1/2 ct. diamond |
| 2080 | Angel Wing ring with 1/2 ct. emerald cut diamond | 2106 | Knocker pendant with 6x8 pear shaped sapphire |
| 2081 | Spiral ring with 1/2 ct. diamond | 2107 | Knocker earrings with 5x7 pear shaped sapphire |
| 2082 | Elizabethan ring with 1/2 ct. diamond and two 5 pt. diamonds | | |
| 2083 | Bridge ring with 1/2 ct. diamond | | |







Engagement Rings





Unique Design





Fine Precious Gems





Custom Gold Work





Wedding Bands





Beauty Beyond Words





- | | | | |
|------|---|------|--|
| 2108 | Octopus pendant with 7mm sapphire and 5 pt. diamond | 2135 | Dove drop earrings with two 5 pt. diamonds |
| 2109 | Courtyard earrings with 10mm mabe pearls | 2136 | Hoop earrings with two 5 pt. diamonds |
| 2110 | Bead drop earring with 7mm pearls | 2137 | Imported Grape earrings with 5mm round amethyst |
| 2111 | Sun Tower pendant with 5 mm opal | 2138 | Grape Leaf drop earrings |
| 2113 | Royalty pendant with 8x10 oval lotus blossom sapphire, 15 pt. diamond, bars and 18" chain | 2139 | Grape Leaf and Diamond pendant |
| 2114 | Volute style pendant with 10x8 marquise shaped sapphire and two 5 pt. diamonds | 2140 | Winery pendant with 6x8 oval amethyst and 18" chain |
| 2115 | Cone earrings with 5 pt. diamonds | 2141 | Grape Leaf on a Triangle pendant with 5 pt. diamond |
| 2116 | Life Leaf bracelet | 2142 | Grape Leaf on a Triangle earrings |
| 2117 | Family Tree with 3 pt. diamond or with your favorite birthstone | 2143 | Bridge ring with tree diamonds 63 pt. total weight |
| 2118 | Life Leaf pendant with 3 pt. diamond | 2144 | Princess ring with 1/2 ct. diamond |
| 2119 | Life Leaf earrings | 2145 | Expression ring with 1 ct. cushion cut diamond |
| 2120 | Drop earrings with two 15 pt. diamonds | 2146 | Kingdom ring with 1.20 ct. pear shaped diamond |
| 2121 | Circle drop earrings | 2147 | Athens bracelet |
| 2122 | Sunray pendant with 1 ct. diamond | 2148 | Canterbury pendant with 6x8 oval sapphire, bars and 18" chain |
| 2123 | Orbit earrings with 5 pt. diamonds | 2149 | Canterbury earrings |
| 2124 | Classical style earrings | 2150 | Curl earrings |
| 2125 | Grape Leaf pendant with 3 pt. diamond | 2151 | Canterbury bracelet |
| 2126 | Grape Leaf pendant with 3 pt. diamond | 2152 | Antiquity pendant with 9x7 ceylon sapphire and 1/4 ct. diamond, bars and 18" chain |
| 2127 | Grape Leaf and Vine earrings | 2153 | Horizon ring with 60 pt. pear shaped diamond and two 10 pt. diamonds |
| 2128 | Grape Leaf earrings | 2154 | Faithful ring with 3/4 ct. center diamond and two 18 pt. trillions |
| 2129 | Pod ring | 2155 | Sunflower ring with 3/4 ct. yellow diamond and two 1/2 ct. side diamonds |
| 2130 | Fan ring | | |
| 2131 | Cross ring | | |
| 2132 | Fan pendant with 5x7 oval ceylon sapphire | | |
| 2133 | Fragment pendant with 7x7 triangle lotus blossom sapphire and 5 pt. diamond | | |
| 2134 | Double Fan pendant with 4-1/2 mm ceylon sapphire | | |



Something in the nature of gold is exclusively unique. Like nothing else seen by man under the sky. Its qualities are both practical and stirringly magical. It has always been since man first laid his eyes on this golden metal. Throughout the ages in the most primitive and in the most sophisticated cultures man has pursued gold. It has become the metal of choice for adorning the lady.

At Rick Mahonski Goldsmith we are as serious today in continuing the centuries old tradition as our ancestors. Many of the techniques and processes have remained the same for thousands of years. In using these "old techniques" we are striving to create beautiful pieces of art for body adornment. You can be assured of the best craftsmanship in each piece we create. The metals are the purist and the gemstones are the finest. The elegance of each design will make a statement about you without saying a word.

The greatest compliment I can receive is to see someone wearing my jewelry. I truly appreciate your business and will work diligently to satisfy each customer.

Sincerely,
Rick Mahonski

829 WEST SOUTHERN AVENUE • SOUTH WILLIAMSPORT, PA 17702
1-800-599-5833 • (570) 322-2516 • FAX (570) 327-5511

Over 2500 designs on the web at
www.rickmahonski.com